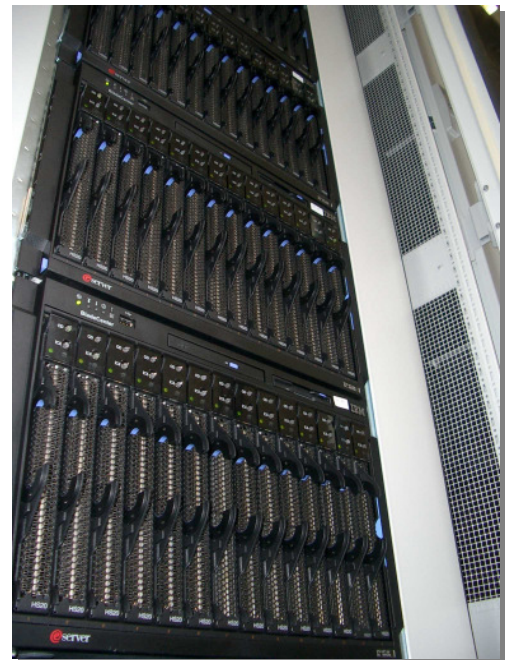


2 x 15 kW Cooling Capacity for IBM Blade Center Rittal LCP at Bayer CropScience

No chance for heat accumulation. For most advanced research projects, Bayer CropScience Deutschland GmbH needs perfect server performance with optimal thermal management. Profi AG, an IBM Premier Partner, uses server racks with fully equipped Rittal LCP Liquid Cooling Packages.

Bayer CropScience GmbH is a crop protection research enterprise. Using highly sophisticated algorithms and appropriate software, Bayer CropScience GmbH searches for new fungicides, herbicides and insecticides by examining the suitability of chemical compounds which have not yet been synthesized.

The computing expenditure for this "virtual screening" is enormous. In cooperation with Profi AG, an IBM Premier Partner, Rittal has developed an all-inclusive solution for efficient server cooling. Four Blade Centers are installed in each of the two server racks which generate a heat loss of 15 kW per rack. To dissipate this considerable waste heat (2 x 15 kW), two Rittal LCPs are used, while a third LCP provides optimal redundancy. With the newly installed Blade Center Cluster and the Rittal Liquid Cooling Packages, the interaction of up to one million virtual molecules with a certain protein can be examined within one day.



With the Liquid Cooling Package, Rittal provides a climate control innovation which in a superior manner solves the problem of great heat loss by employing a scalable cooling system. Thus, no heat accumulation can get in the way of further crop protection research.

Components: LCP

Wish to know more about this project?

RimatriX5 Solution Center:

Hotline: +49 (0)2772 505-1800

E-mail: rimatriX5@rittal.de